

General Building Information

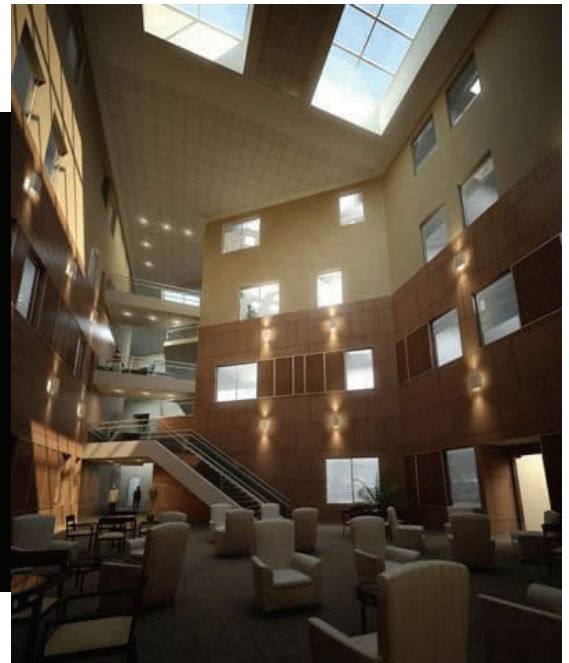
Location Richmond, Virginia, Monroe Park Campus

Size 245,000 Square Feet

Levels Above Grade 4

Contract Size \$65 MM

Virginia Commonwealth University **Owner**
Moseley Architects **Architect**
Gilbane Building Co. **Construction Manager**
Construction Management **Delivery Method**



Systems

Electrical

- The incoming service feed is 3-Phase 480/277 V
- Distribution switch board is 4000A, 3-phase, 480/277 V; 120/208 V transformer to service each floor
- The system is backed up with a 1000kW, 3-phase, 480/277 V diesel-powered emergency generator.

Mechanical & Plumbing

- All-water variable volume air-handling system located on the rooftop with 10 RHUs
- Utilizes the following fire protection systems: Automatic wet-type, Class 1 standpipe systems, Wet-pipe sprinkler systems, Dry-Pipe sprinkler systems and Pre-action sprinkler systems

Structural

- The foundation is a 4-inch typical slab on grade; normal weight concrete
- Concrete Shear Wall ranging in thicknesses from 8-inches (full-height) to 12-inches (full height)
- Combination of steel and concrete structural framing; W-shaped beams and columns; 20-inch deep concrete joists

Architectural Features

- Two (2) full-height (4-story) atriums
- A roof screen at a 10:12 pitch to conceal the roof-top mechanical system
- A large crescent-shaped inlet (approximately a 50-foot radius along the side of the building) that will house a courtyard along with intricate brick/pavement walkways around the building



Lori E. Farley

ARCHITECTURAL ENGINEERING CONSTRUCTION MANAGEMENT

THE PENNSYLVANIA STATE UNIVERSITY

<http://www.engr.psu.edu/ae/thesis/portfolios/2008/lef143/>